

MONTHLY MEMBERSHIP PROGRESS REPORT

District 39 E

Results as of: 3/31/2020

GMT:

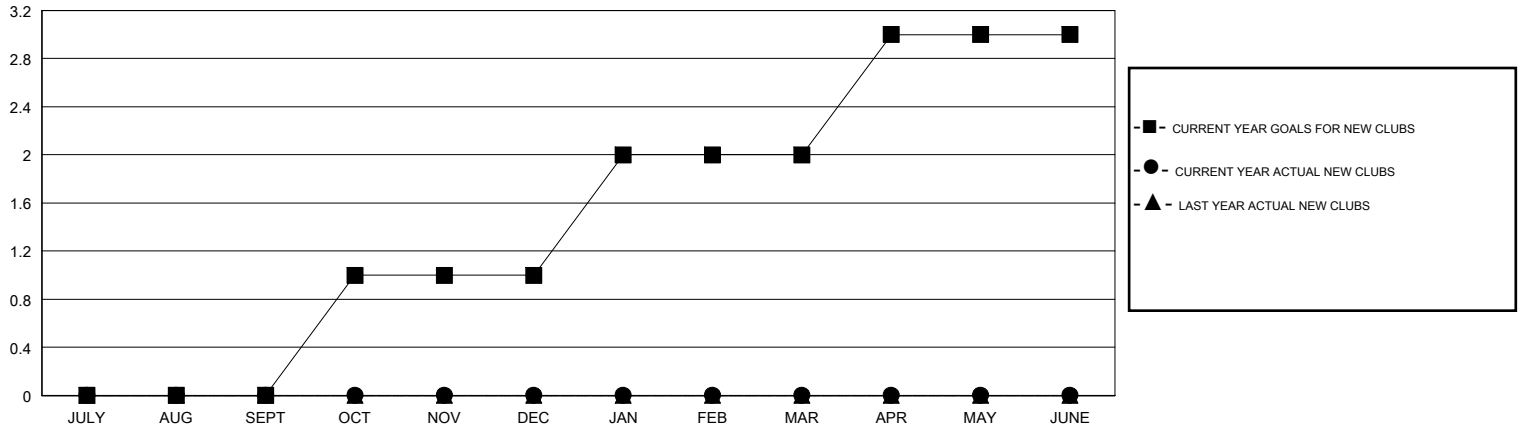
LOCATION IDAHO

GMT CA

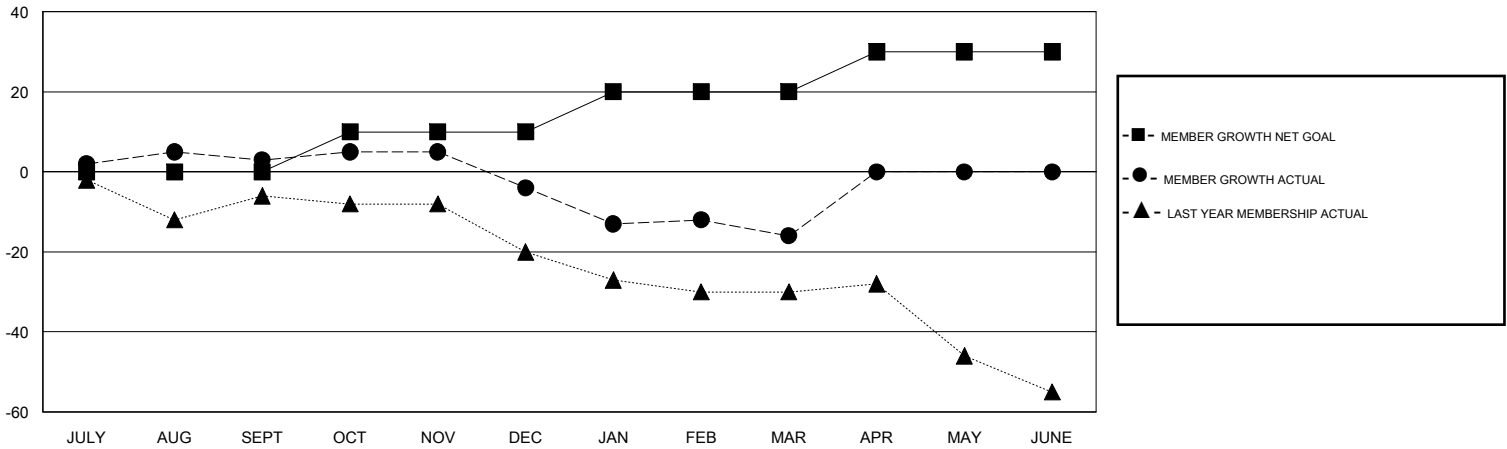
Clubs			
RESULTS FOR 2019-2020			
QUARTER	NEW CLUB GOAL	NEW CLUBS	DROPPED CLUBS
JULY/AUG/SEPT	0	0	0
OCT/NOV/DEC	1	0	1
JAN/FEB/MAR	1	0	0
APR/MAY/JUNE	1	0	0

Members			
RESULTS FOR 2019-2020			
QUARTER	MEMBER GROWTH NET GOAL	MEMBER GROWTH ACTUAL	DROPPED MEMBERS ACTUAL (including transfers)
JULY/AUG/SEPT	0	6	3
OCT/NOV/DEC	10	3	10
JAN/FEB/MAR	10	3	15
APR/MAY/JUNE	10	0	0

GOALS AND ACTUAL NEW CLUBS CUMULATIVE



GOALS AND ACTUAL MEMBERS CUMULATIVE



DROPPED CLUBS: 1	6 CLUBS OF 24 ADDED 1 OR MORE NEW MEMBERS	<u>GENDER DISTRIBUTION</u> MALE 251 (61.07%) FEMALE 160 (38.93%)
DROPPED MEMBERS DECEASED 2 CLUB CANCELLED 2 OTHER 24 <hr/> TOTAL 28	CLICK HERE FOR CUMULATIVE MEMBERSHIP DATA	TOTAL FAMILY UNIT MEMBERS 137 FAMILY MEMBERS PAYING HALF DUES 73